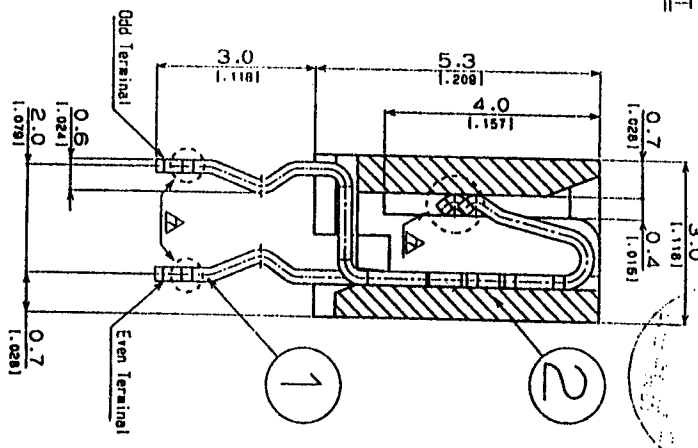
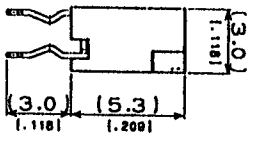
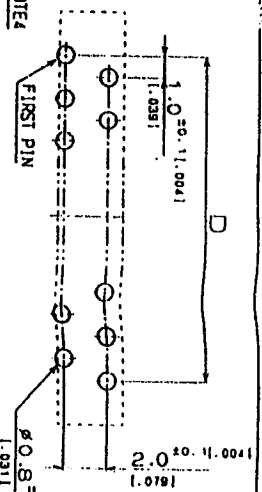
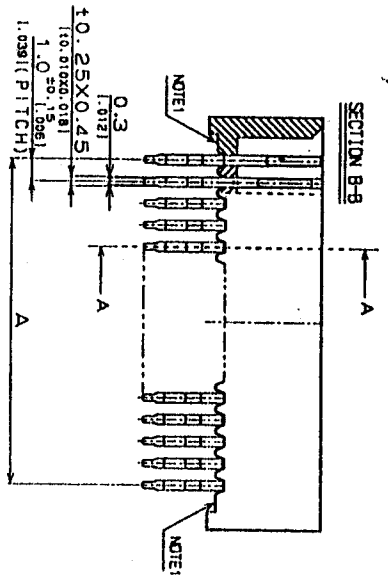
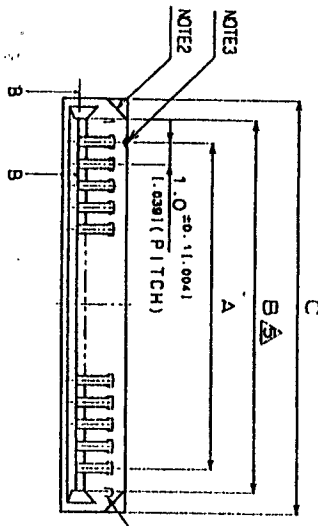


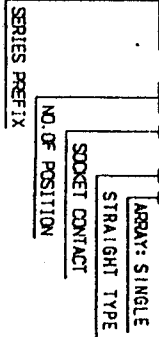
800541SNG  
REV. 390



- NOTE 1. COMPANY LOGO AND TOOL MARK ARE APPEARED IN THIS AREA.
- NOTE 2. CONDUCTOR DIRECTION IS APPEARED IN THIS AREA.
- NOTE 3. TERMINAL NO. 1 IS APPEARED IN THIS AREA.
- NOTE 4. THE NO. OF POSITION IS APPEARED IN THIS AREA.
- NOTE 5. THE THICKNESS OF FPC/FPC IS MAX. 0.3 ±0.051.0021

OPERING INFORMATION.

GF102-\*\*-S-TS



TOLERANCE ON DIMENSION	ANGLES
±0.3 ±0.021 ±0.051 ±0.061	X- X-X- ±
±0.051 ±0.061	XXX ±

DIMENSIONS ARE IN MILLIMETERS (INCHES)	REFERENCE DOCUMENT
AST'D G.S. No.	GSCS-4504
DATE	FEB. 8 1996
DESIGNED	S. J. LEE
CHECKED	
APPROVED	S. B. LEE

ITEM	DESCRIPTION	MATERIAL	FINISH	QTY	REMARKS
2	INSULATOR	GF PBT		1	UL94V-0
1	SOCKET CONTACT	PHOSPHOROUS BRONZE	Sn PLATING	n	

SCALE	WT.	QTY	REMARKS
4/1			

555, HONG-DOONG, ANYANG-SI  
KUNGSU-DO, #30-060, KOREA

ULG Cable

DRG No. GUS145006

REV. No.	DATE	DRW. No.	DESCRIPTION	DATE	DESIGNED	CHECKED	APPROVED
5	97.07.02	0243	CHANGING SHAPE AND RETRACING		O. J. SHIN	S. J. LEE	C. H. DO
6	98.06.25	0278	ADDITION THE NO. OF POSITION		K. K. DOO	S. J. LEE	S. K. DO
7	99.07.05	0400	CHANGING SHAPE				

TABLE-1

NO. OF POSITION	A ±0.2 1.0241	B ±0.2 1.0241	C ±0.3 1.0241	D ±0.1 1.0241	E ±0.1 1.0241
4	3.0	5.1	7.0	3.0	5.0
5	4.0	6.1	8.0	4.0	6.0
6	5.0	7.1	9.0	5.0	7.0
7	6.0	8.1	10.0	6.0	8.0
8	7.0	9.1	11.0	7.0	9.0
9	8.0	10.1	12.0	8.0	10.0
10	9.0	11.1	13.0	9.0	11.0
11	10.0	12.1	14.0	10.0	12.0
12	11.0	13.1	15.0	11.0	13.0
13	12.0	14.1	16.0	12.0	14.0
14	13.0	15.1	17.0	13.0	15.0
15	14.0	16.1	18.0	14.0	16.0
16	15.0	17.1	19.0	15.0	17.0
17	16.0	18.1	20.0	16.0	18.0
18	17.0	19.1	21.0	17.0	19.0
19	18.0	20.1	22.0	18.0	20.0
20	19.0	21.1	23.0	19.0	21.0
21	20.0	22.1	24.0	20.0	22.0
22	21.0	23.1	25.0	21.0	23.0
23	22.0	24.1	26.0	22.0	24.0
24	23.0	25.1	27.0	23.0	25.0
25	24.0	26.1	28.0	24.0	26.0

APPLICABLE FPC/FPC LAYOUT

