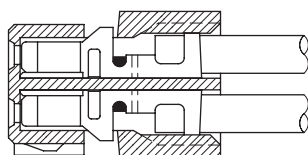
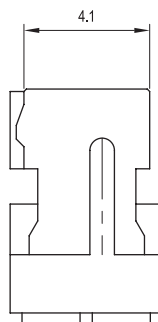
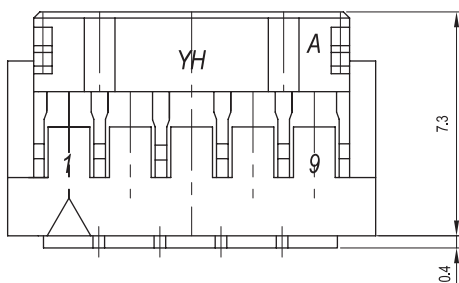
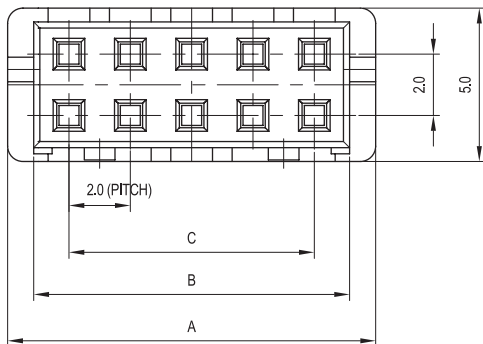
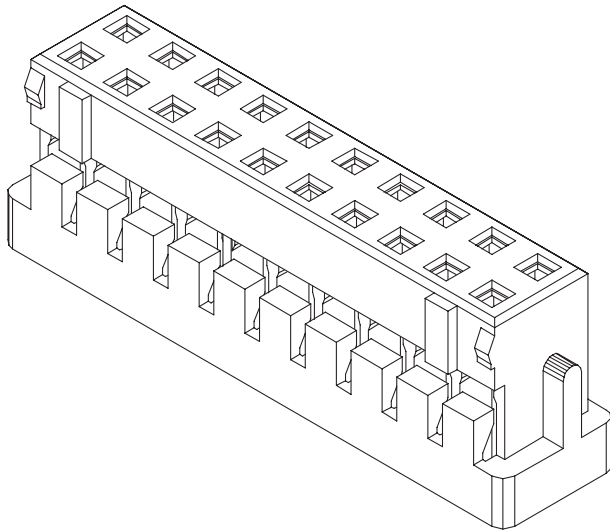


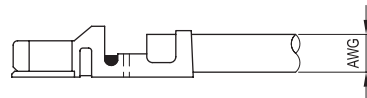
2.00mm (0.079") PITCH CONNECTOR

Wire-to-Board
Housing

YDH200 Series



TERMINAL ASSEMBLY DRAWING



AWG : #22 ~ #28

Material

I/NO	DESCRIPTION	TITLE	MATERIAL
1	HOUSING	YDH200	PA66, UL 94V Grade

Available Pin

PARTS NO.	A	B	C
YDH200-04	6.0	4.4	2.0
YDH200-06	8.0	6.4	4.0
YDH200-08	10.0	8.4	6.0
YDH200-10	12.0	10.4	8.0
YDH200-12	14.0	12.4	10.0
YDH200-14	16.0	14.4	12.0
YDH200-16	18.0	16.4	14.0
YDH200-18	20.0	18.4	16.0
YDH200-20	22.0	20.4	18.0
YDH200-22	24.0	22.4	20.0
YDH200-24	26.0	24.4	22.0
YDH200-26	28.0	26.4	24.0
YDH200-28	30.0	28.4	26.0
YDH200-30	32.0	30.4	28.0
YDH200-32	34.0	32.4	30.0

Specification

ITEM	SPEC
Voltage Rating	AC/DC 250V
Current Rating	AC/DC 3A
Operating Temperature	-25°C ~ +85°C
Contact Resistance	30MΩ MAX
Withstanding Voltage	AC1000V/1min
Insulation Resistance	1000MΩ MIN
Applicable Wire	AWG #22~#28
Applicable P.C.B	-
Applicable FPC/FFC	-
Solder Height	-
Crimp Tensile Strength	-
UL FILE NO	E108706

Application Terminal : YST200 (83 page)