



IEC Connector EN60320 C14

0711-2 Series

Power Rating : 10A 250V AC European & UL, 15A
250V AC CSA

Insulation Resistance : over 100MΩ 500V DC

Withstanding Voltage : 2,000V AC One Minute

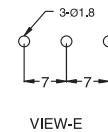
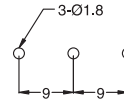
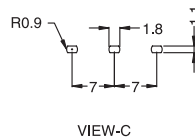
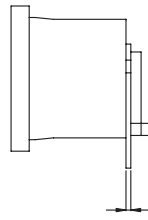
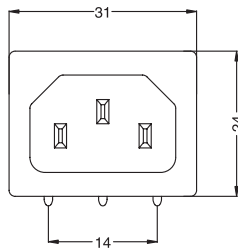
Operating Rating Temperature : -25°C to +85°C

Main Unit Material : Thermoplastic UL Flammability
94V-0 & Copper Alloy

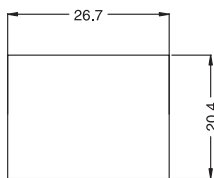
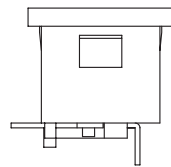
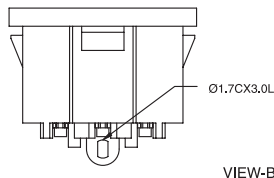
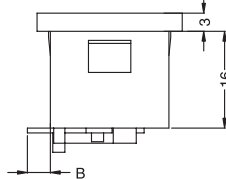
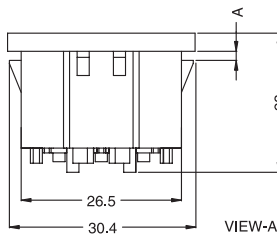


Power Inlet

Unit:mm



PCB LAYOUT



PANEL CUT-OUT

ORDER NO.	VIEW OPTION	PCB LAYOUT OPTION	DIM. A	DIM. B
0711-2-P10	A	C	1.1	3
0711-2-P12	A	C	1.3	3
0711-2-P15	A	C	1.6	3
0711-2-P20	A	C	2.1	3
0711-2-P30	A	C	3.1	3
0711-2-P10-9	A	D	1.1	3.8
0711-2-P12-9	A	D	1.3	3.8
0711-2-P15-9	A	D	1.6	3.8
0711-2-P20-9	A	D	2.1	3.8
0711-2-P30-9	A	D	3.1	3.8
0711-2-P710	B	E	1.1	5
0711-2-P712	B	E	1.3	5
0711-2-P715	B	E	1.6	5
0711-2-P720	B	E	2.1	5
0711-2-P730	B	E	3.1	5

