



IEC Connector EN60320 C14

0714-1 Series

Power Rating : 10A 250V AC European & UL, 15A 125V AC CSA

Insulation Resistance : over 100MΩ 500V DC

Withstanding Voltage : 2,000V AC One Minute

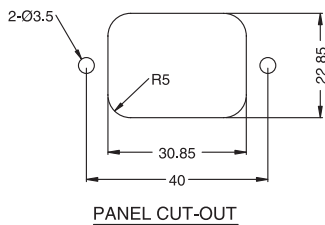
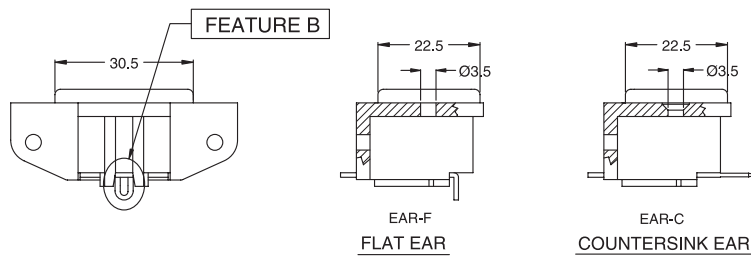
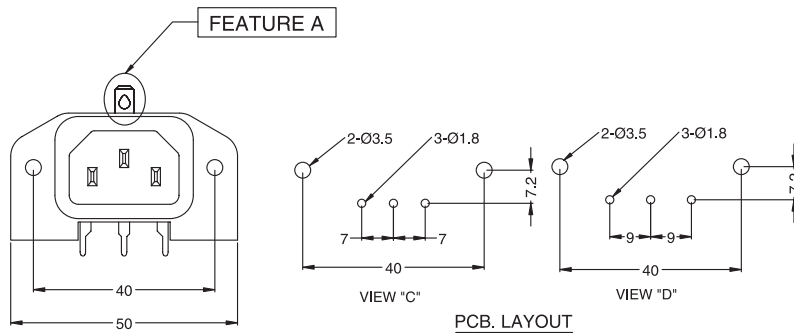
Operating Rating Temperature : -25°C to +85°C

Main Unit Material : Thermoplastic UL Flammability 94V-0 & Copper Alloy



Power Inlet

Unit:mm



ORDER NO.	TERMINAL OPTION	PCB. PITCH OPTION
0714-1-F7	B	C
0714-1-F9		D
0714-1-F71	A	C
0714-1-C71		C

C:EAR-C F:EAR-F

