



IEC Connector EN60320 C8

0720 Series

Power Rating : 2.5A 250V AC

Insulation Resistance : over 100MΩ 500V DC

Withstanding Voltage : 2,000V AC One Minute

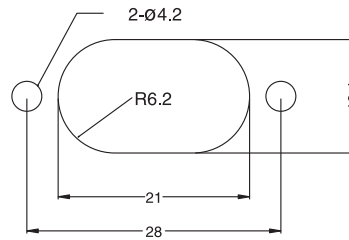
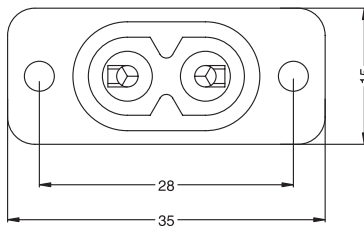
Operating Rating Temperature : -25°C to +85°C

Main Unit Material : Thermoplastic UL Flammability 94V-0 & Copper Alloy

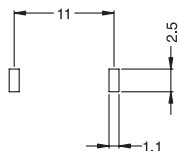
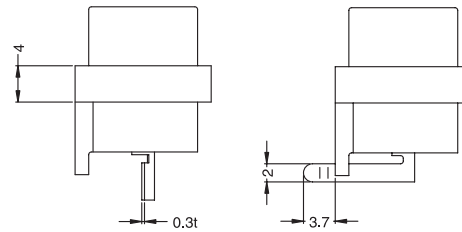
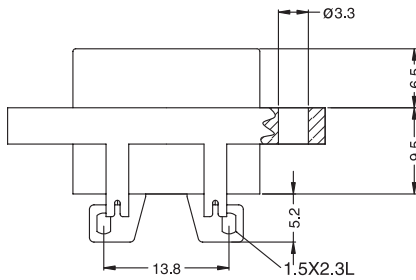


Power Inlet

Unit:mm



PANEL CUT-OUT



PCB. LAYOUT

ORDER NO.	TERMINAL OPTION
0720-FS	SOLDER TYPE
0720-FP	PCB. MOUNTING TYPE

