



# IEC Connector EN60320 C8

## 0721-4 Series

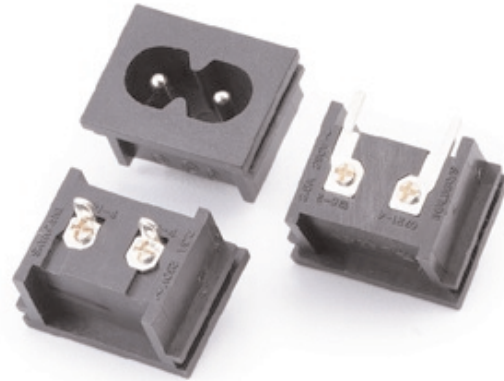
**Power Rating :** 2.5A 250V AC European & UL & CSA,  
7A 125V AC UL & CUL

**Insulation Resistance :** over 100MΩ 500V DC

**Withstanding Voltage :** 2,000V AC One Minute

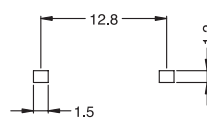
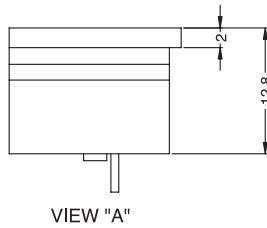
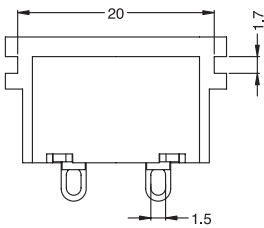
**Operating Rating Temperature :** -25°C to +85°C

**Main Unit Material :** Thermoplastic UL Flammability  
94V-0 & Copper Alloy

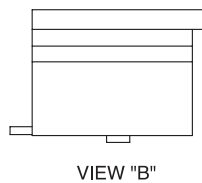
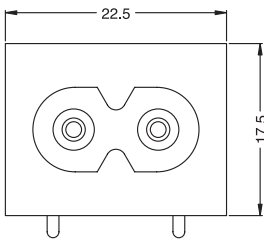


### Power Inlet

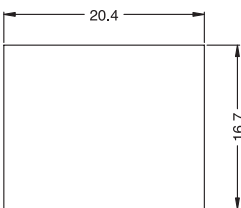
Unit:mm



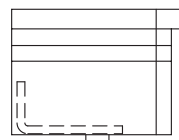
PCB. LAYOUT



VIEW "B"



PANEL CUT-OUT



VIEW "C"

ORDER NO.	CODE	VIEW	TERMINAL OPTION
0721-4-PS	S	A	2.5mm/SOLDER TAB 
0721-4-PN	N	A	4.0mm/SOLDER TAB 
0721-4-PLS	LS	C	2.8mm/SOLDER TAB 
0721-4-PP	P	B	FOR PCB. MOUNTING 

