



IEC Connector EN60320 C8

0721 Series

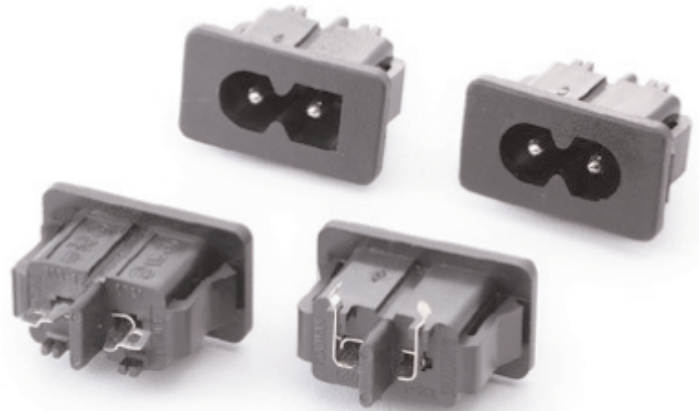
Power Rating : 2.5A 250V AC European & UL & CSA,
7A 125V AC UL & CUL

Insulation Resistance : over 100MΩ 500V DC

Withstanding Voltage : 2,000V AC One Minute

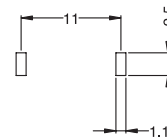
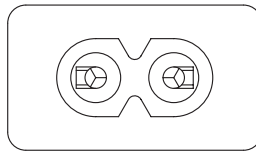
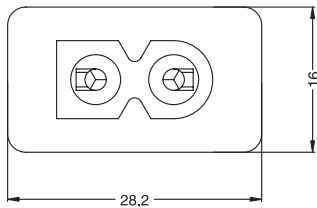
Operating Rating Temperature : -25°C to +85°C

Main Unit Material : Thermoplastic UL Flammability
94V-0 & Copper Alloy

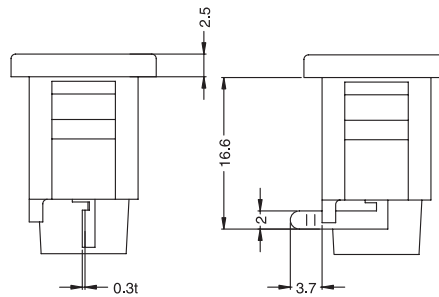
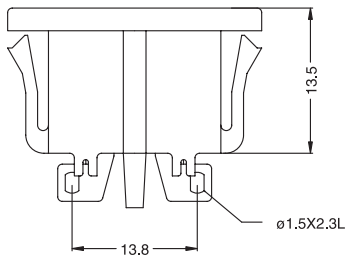


Power Inlet

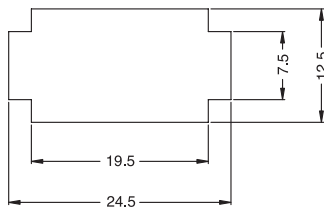
Unit:mm



PCB. LAYOUT



THICKNESS: 0.8~1.3t



PANEL CUT-OUT

ORDER NO.	HOUSING OPTION	TERMINAL OPTION
0721-PS	NON-POLARIZED	SOLDER TYPE
0721-PP	NON-POLARIZED	PCB. MOUNTING TYPE
0721-SS	POLARIZED	SOLDER TYPE
0721-SP	POLARIZED	PCB. MOUNTING TYPE

