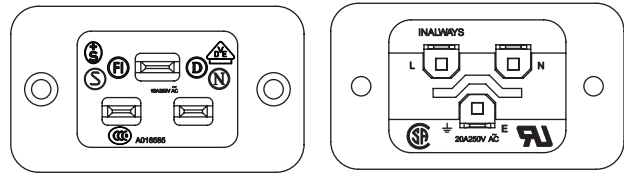


0722 Series

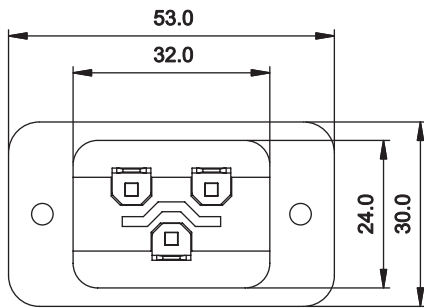
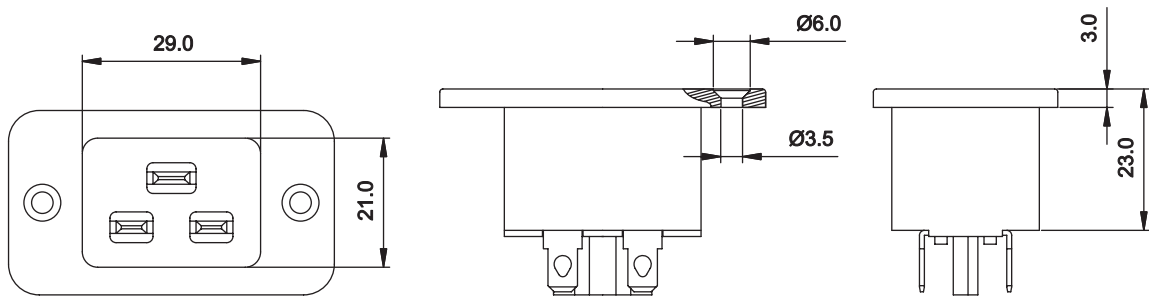
AC INLET 3P Screw-Mounting
IEC Connector EN60320 C20



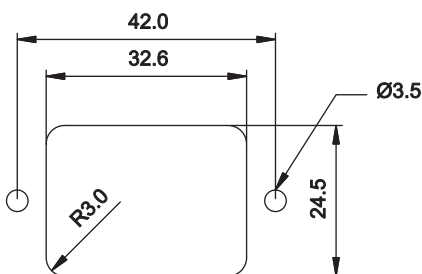
Specifications :

Power Rating : 16A 250V AC European
20A 250V AC UL & CSA
Insulation Resistance : Over 100MΩ 500V DC
Withstanding Voltage : 2,000V AC One Minute
Operating Rating Temperature : -25°C to +85°C
Body Material : Thermoplastic UL Fammability
94V-0 & Copper Alloy

Unit : mm



Recommended Panel Cutout



P/N	Terminal Option
0722-CW	
0722-CQ	

