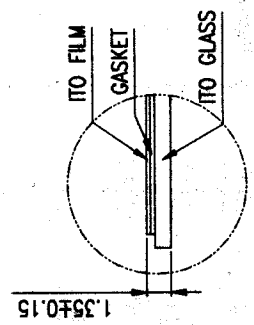
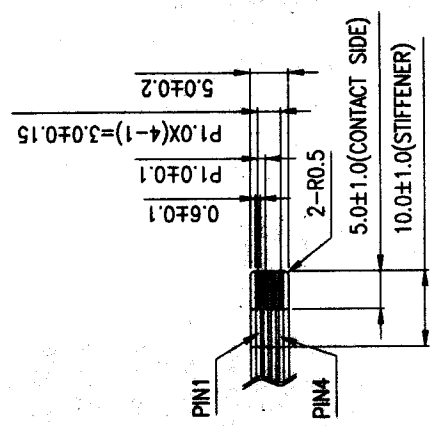
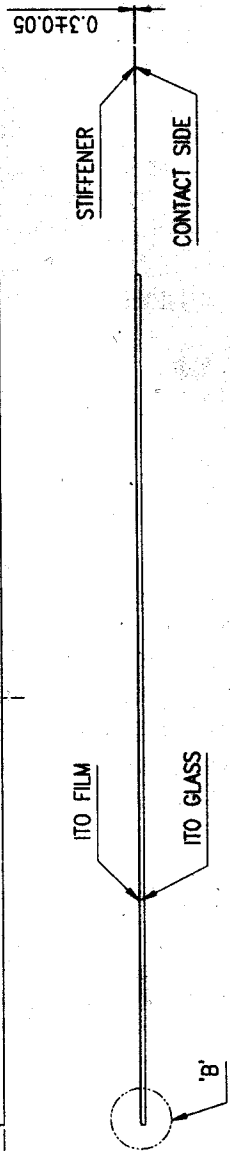
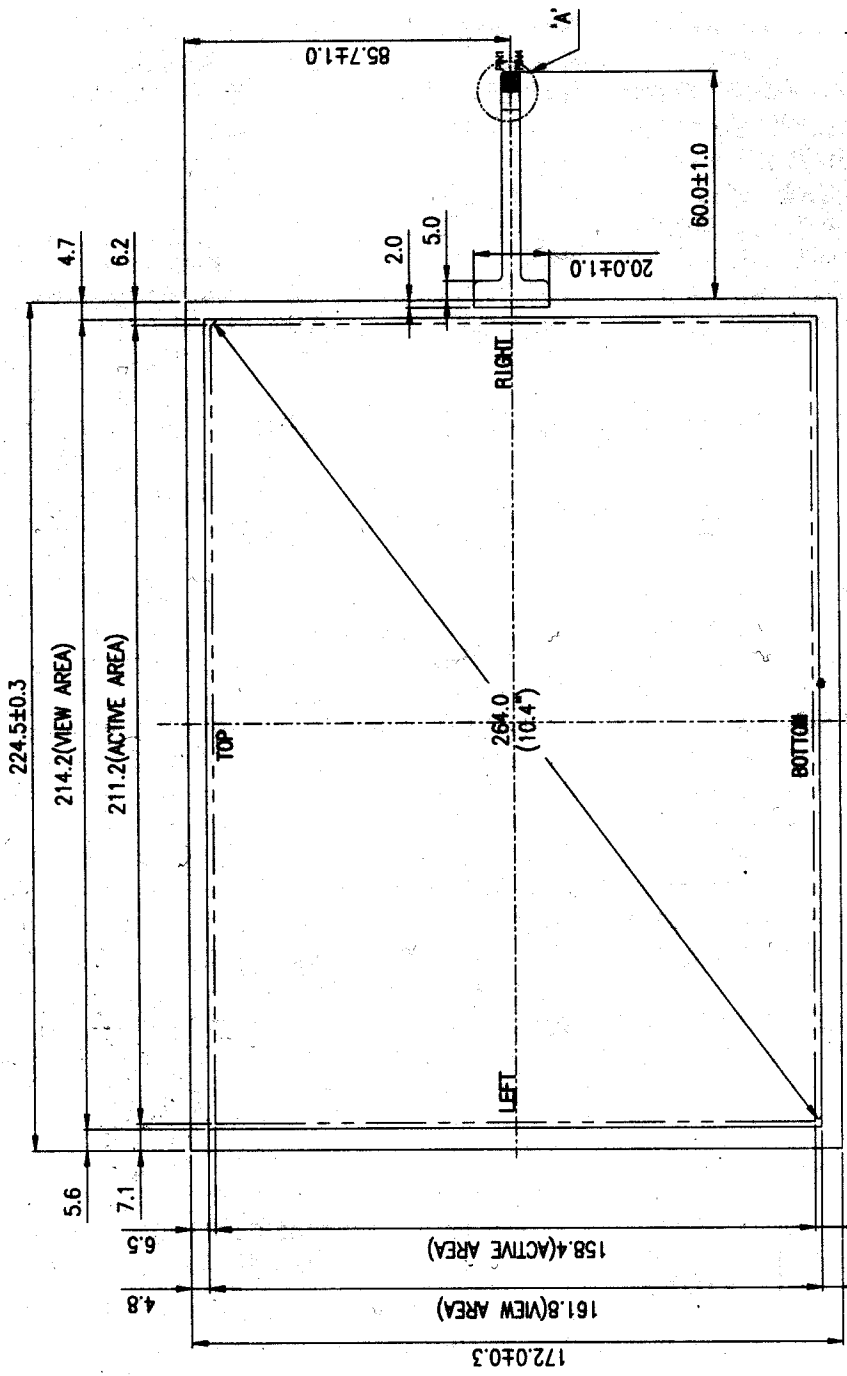


REVISED	DRAWN	CHECKED	APPROVED
0	MEH DYNW	02.01.12	MJ.KIM



NOTE

- 1) TYPE : NON-GLARE TYPE
- 2) GLASS THICKNESS : 1.1t
- 3) FILM THICKNESS : 175/100 ± 10µm
- 4) CONNECTOR : FPC
- 5) GENERAL TOLERANCE : ± 0.3



TERMINAL NO	SYMBOL
1	LEFT
2	TOP
3	RIGHT
4	BOTTOM

10.4" TOUCH PANEL

SCALE : NONE

APPROVE	UNIT	SCALE	DESCRIPTION	REV.
CHECK	SCALE	NONE	10.4" TOUCH PANEL	1/1
DESIGN				
DRAW				